

# **DRAFT FOR REVIEW ONLY**

**Add the following:**

## **6.6. Recommended Plans and Programs to Support Easton's Conservation, Development, and Infrastructure Strategies**

### **6.6.1 Sport Hill Road Transportation Concept Plan**

The Town of Easton seeks to improve public safety and promote public health through the by planning safe and accessible expansion of bicycle and pedestrian amenities that are consistent with the Plan of Conservation and Development. This concept plan would achieve these goals by linking the community's to its schools, town facilities, recreational opportunities, locations, landmarks, and other amenities by providing safe and alternative transportation facilities, modes of transportation designed in harmony with the neighborhoods in Town, in which they are located is a priority for the Town.

In keeping with the this Town's priorities and the nature of this Plan, the Commission recommends the implementation of the Sport Hill Road Transportation Concept Plan derived from a well-attended community design charette in the Fall of 2019. This concept plan was developed by the engineering and design firms Consultants from Fitzgerald & Halliday Inc. (FHI) and Toole Design, who collaboratively guided the charette with assistance from METROCOG and the Town of Easton. The charette focused on collecting public input to improve pedestrian safety and accessibility along Sport Hill Road and Banks Road. The engineering firms consultants, METROCOG, and Town of Easton representatives conducted a field review, met with key stakeholders from throughout the community, hosted a public informational session with breakout interview groups, conducted a survey, and developed a concept plan from information gathered.

A field review conducted at the beginning of the charette found the following observations:

- Lack of pedestrian facilities
- Limited or no shoulder space
- Pedestrians usage are present along Sport Hill Road
- Helen Keller Middle School (HKMS) students walk to the Easton Village Store
- Connections to Silverman's Farm, Snow's Farm, Sport Hill Farm, and Sherwood Farm are desiredable
- Walking connections along Center Road to Morehouse Road are desiredable
- High traffic speeds (posted 35 MPH, 85th% speed 42-44 MPH)
- Challenging access to driveways and side streets
- Relatively high crash occurrences Crashes relatively high when compared to other Easton roads
- Wide right turning (southbound) Generous corner radius on at the Center Road and Sport Hill Road intersection
- Heavily Frequently used route by trucks, emergency, and farm vehicles and farm vehicles
- Mixed variety of land uses
- Some wide driveways
- Seasonal events contribute to Localized congestion due to seasonal events

The survey revealed that safety is an issue in this area which was shared by roughly about 70% of respondents, citing with "Lack of Sidewalks" and "Lack of Shoulders for Bicyclists" being the largest concerns. More than half of respondents would consider walking in the area if improvements were made and over 40% of respondents would consider biking as well also. Many also responded that students frequently travel in this location area from the middle school. Several parents have restricted their children from travelling through the area due to safety concerns and would like to see improvements made so so their children and others can could be safely travelling along the corridor through the area.

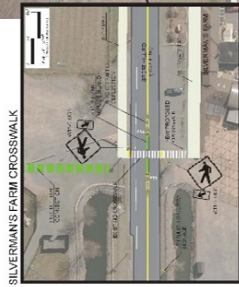
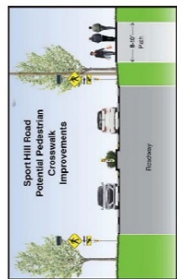
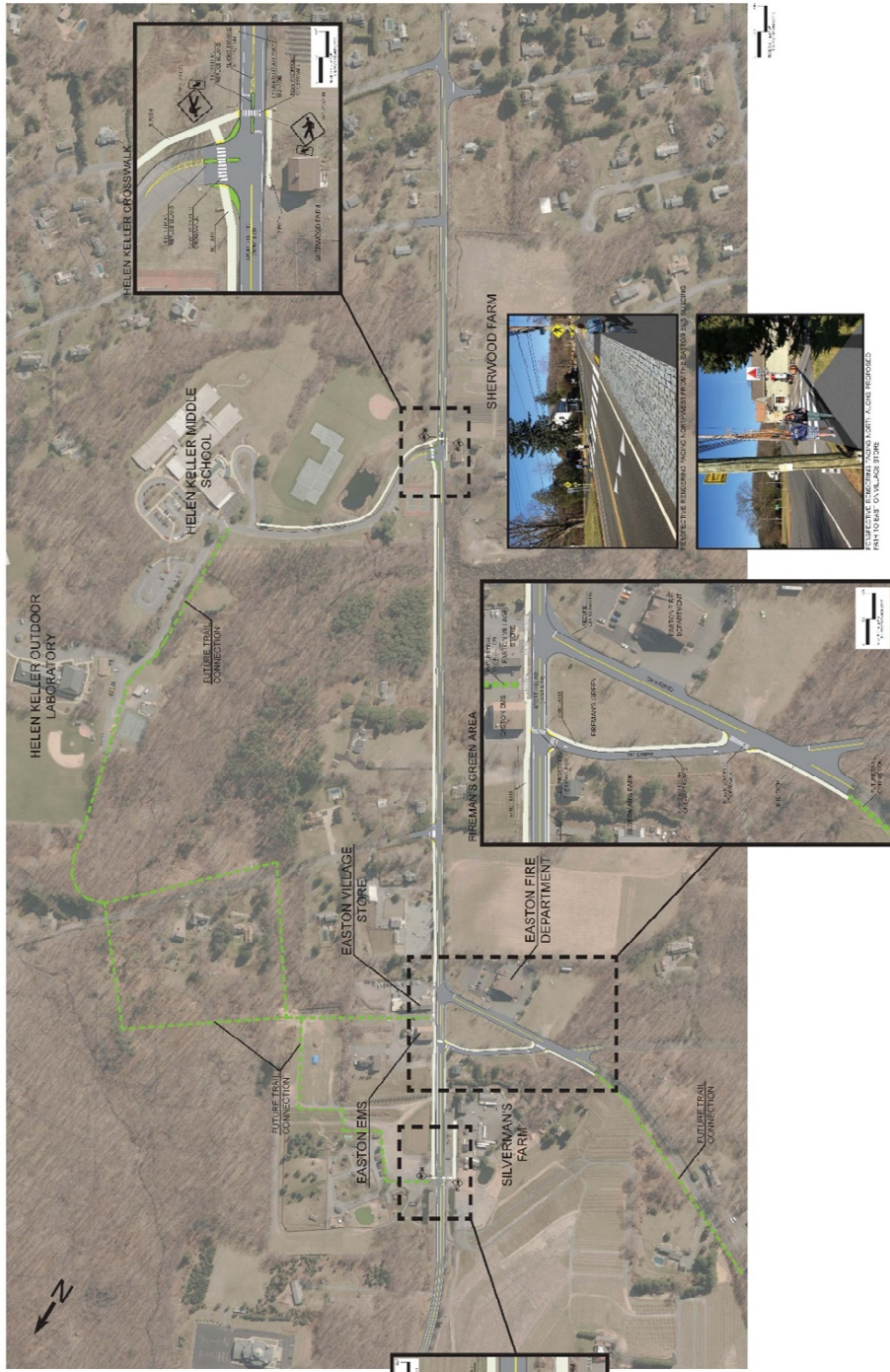
## **DRAFT FOR REVIEW ONLY**

The result of all information gathered was ~~the~~ conceptual design plan, found on the following page, was created as a result of the information gathered throughout the charrette, field review, group stakeholder interviews, and survey responses. The plan calls for a shared-use path along the eastern side of Sport Hill Road from HKMS to the Easton Village Store. ~~From there, t~~The path would ~~then~~ transition to a wide concrete sidewalk that would continue north to the existing crosswalk in front of Silverman's Farm. A short segment of Banks Road from Sport Hill Road to Center Road ~~may~~ would ~~convert~~ be converted to a one-way eastbound roadway with a sidewalk ~~provided along the southern~~ portion of the roadway, along the Fireman's Green ~~where the pavement is no longer needed~~. The intersection of Sport Hill Road and Center Road ~~will then~~ would be realigned to ~~allow for~~ provide a ~~improved~~ more ideal intersection geometry. Lastly, ~~the~~ plan will include three enhanced pedestrian crossing areas along Sport Hill Road ~~would also be provided with one being~~ at the existing Silverman's Farm crossing location, ~~one~~ at Banks Road, and ~~one~~ at the HKMS driveway.

DRAFT

# DRAFT FOR REVIEW ONLY

## SPORT HILL ROAD TRANSPORTATION CONCEPT PLAN EASTON, CT



NOV. 2020 | EASTON, CT | SCALE 1:500

**IT** FITZGERALD & HALLIDAY, INC.  
Innovative Planning. Better Communities

**TOOLE**  
DESIGN



NOV. 2020 | EASTON, CT | SCALE 1:500



NOV. 2020 | EASTON, CT | SCALE 1:500